

Deakin School of Exercise  
and Nutrition Sciences



**DEAKIN**  
UNIVERSITY

RECRUITMENT

# ASSOCIATE PROFESSOR OF SPORTS SCIENCE

## CONTACT

Rod Snow  
Deputy Head of School  
School of Exercise and Nutrition Sciences  
Telephone +61 3 9251 7315  
[rod.snow@deakin.edu.au](mailto:rod.snow@deakin.edu.au)

APPLICATIONS CLOSE ON SUNDAY 25 JUNE 2017

Position description current from 1 May 2017

[deakin.edu.au/exercise-nutrition-sciences](http://deakin.edu.au/exercise-nutrition-sciences)



# ABOUT DEAKIN

Deakin University is ranked in the top 3% of universities worldwide across each of the three major international rankings\*. We are also ranked in the top 50 under 50 years of age in both the QS and THES. 89% of Deakin's research was rated at or above world standards in the Australian Government's Excellence in Research for Australia (ERA) 2015 assessment.

With over 53,000 students (17% international), Deakin is one of Australia's largest universities and its education and research activities have international reach.

Since 1974 Deakin has been committed to lifelong learning; to providing students with choices about how, when and where learning occurs – almost a quarter of Deakin's students study wholly in the cloud (online). Affirming its long held reputation for accessibility, Deakin has rated first in Victoria for student satisfaction for six consecutive years (AGS 2010-2015). In 2014, Deakin received the Premier's Award for international education provider of the year and was named Victoria's leading Education and Training provider in the Victorian Governor's Export Awards in both 2015 and 2016.

Deakin's four faculties offer a comprehensive range of courses across the arts, science, sport, nutrition, architecture, business, law, medicine, optometry, engineering, nursing, allied health, psychology and teaching.

Deakin has always had a strong reputation for innovation and in this digital age, has been driving the digital frontier in the use of new and emerging technologies in research, teaching and community engagement.

Deakin has 4 Institutes and many Strategic Research Centres and is one of only a few Universities to focus on manufacturing research. Deakin's carbon fibre research has captured the attention of automotive and aeronautical manufacturing globally with its Carbon Nexus facility acknowledged as a nationally significant piece of infrastructure embracing new ways of manufacturing in automotive, aerospace and construction industries.

## OUR STRATEGY

*LIVE the future: Agenda 2020* articulates Deakin's strategy for defining and distinguishing Deakin through to the end of 2020. Deakin aims to harness the power, opportunity and reach of the digital world in all that it does. It aspires to be Australia's premier university in driving the digital frontier – to enable globally connected education for the jobs of the future, and research that makes a difference to the communities we serve.

Deakin has a long tradition of innovation in learning and examples of Deakin's success in the current landscape of digital change include:

- DeakinSync, an innovative communication and collaboration platform for students and staff.
- World-first partnership with cognitive computer IBM Watson to provide students with personalised advice 24/7 365 days a year on multiple devices.
- Technology rich, flexible and stylish learning spaces across all Deakin campuses.
- Deakin was awarded the gold global award in the Reimagine Education awards for innovative higher education pedagogies enhancing learning and employability.



\* Shanghai Jiao Tong Academic Ranking of World Universities (ARWU), Times Higher Education and QS World University Rankings



# FACULTY OF HEALTH

Deakin Health is recognised in Australia and internationally for its teaching, training, research and service. We are one of the fastest growing health faculties in Australia. Our teaching, research and service contribute to improved health and wellbeing, and to strengthening the health and human services sectors in Australia and the Asia-Pacific. We assist governments, communities and organisations to develop a wide variety of health and social programs and policies.

The Faculty of Health teach a large variety of health disciplines and sub-disciplines at campuses and health services in Geelong, Burwood, Ballarat, Warrnambool and other locations in Melbourne, Western Victoria and further afield. Our courses are delivered both on campus and online via our Cloud Campus using a state-of-the-art blend of face-to-face and online teaching methods.

The Faculty is made up of five schools:

- School of Exercise and Nutrition Sciences
- School of Health and Social Development
- School of Medicine
- School of Nursing and Midwifery
- School of Psychology

Through our Schools and research groups we work collaboratively with a wide range of external organisations. These include federal and state governments, schools, public and private hospitals, health centres, non-government organisations such as Diabetes Australia, community groups, international bodies such as the World Health Organization, commercial companies, and other universities and research institutes at home and overseas. A number of highly productive partnerships across the sector include joint appointments at professorial level.

Deakin Health is guided by a strong and vibrant commitment to improving the health and wellbeing of all people in Australia and our surrounding region. Please join us in this important work.

## OUR MISSION

The Faculty of Health strives to achieve Deakin's vision by:

1. inspiring our students to realise their potential, develop their knowledge and skills, and grow as individuals who excel in the workplace, contribute to their communities and engage in lifelong learning
2. providing learning experiences that are personal, dynamic and contemporary, with clearly articulated expectations and standards
3. undertaking world-class research to support evidence-based policy and practice and provide a stimulating research training environment
4. engaging our students, alumni, staff, partners and friends to participate fully in the life of the Faculty and University and to become global citizens.



# DEAKIN SCHOOL OF EXERCISE AND NUTRITION SCIENCES

School of Exercise and Nutrition Sciences delivers undergraduate and postgraduate courses in food and nutrition sciences, human nutrition, dietetics, exercise and sports science and clinical exercise to prepare our graduates for careers in the health and sport sectors. The School is recognised as one of the leading education providers in the country with our research being ranked as well above world standard.

Learning and teaching within the School seeks to prepare students for careers where they can promote exercise and optimal nutrition in the community and assist those with disease to better manage their health. We also train students to work with and enhance the performance of athletes and sporting teams. Our courses are informed through active and ongoing industry connections and provide work integrated learning experiences that enable graduates to be work ready and globally capable.

The School conducts world-class research that provides the evidence base to promote health and improve sports performance, drawing on our expertise in basic science, clinical science and population health. The School hosts the Institute for Physical Activity and Nutrition, the Centre for Sport Research, and the Centre for Advanced Sensory Science. We conduct applied research into the roles of exercise and nutrition in disease prevention and human performance; and we have a strong focus on translating our research into policy and practice by working with government, the community and industry partners to promote health and wellbeing.



# APPOINTMENT OF ASSOCIATE PROFESSOR

The Associate Professor will be responsible for providing outstanding academic and research leadership in the area of Sport Science

The appointee is responsible for:

- The provision of academic leadership
- Program and course development, maintenance and delivery, ensuring relevance and curriculum quality
- Teaching, research, scholarly publication and the generation of research funding
- The ongoing development of the School and Faculty, including the establishment and nurturing of industry links, partnerships and local and international recruitment
- Supervising honours and postgraduate students, ensuring successful and timely completions
- Contributing to the administration of the School, Faculty and University

## TEACHING AND RESEARCH LEVEL D

Level D members of staff typically perform these duties at the following levels:

### RESEARCH AND SCHOLARSHIP

- Recognition as an authority at the national level and an emerging reputation at the international level in research and scholarship, through publication or exhibition in high quality and high impact outlets
- Providing intellectual leadership within their specific areas of research, scholarship or creative activity, including emerging recognition as a public intellectual
- Contributing to the leadership of major research projects, including internal and external collaboration to create new insights and opportunities
- Creating and sustaining research collaborations and partnerships which have demonstrable outcomes
- Contributing to the leadership of research evaluation and assessment activities (e.g. competitive grant assessment, contributing to Editorial Boards, ERA panels)
- Contributing to the leadership of successful development of significant international research programs or partnerships
- Mentoring early career researchers
- Contributing to the leadership, supervision, management and timely completion of HDR students, including advising and improving on research excellence, career development and candidature management
- Promulgating and promoting a culture of research excellence in the University, including mentoring colleagues
- Providing leadership in research and scholarship through roles such as Associate Dean
- Demonstrating the successful application of scholarly and research expertise to innovation and invention, with appropriate involvement in the commercialisation of outcomes

### LEARNING AND TEACHING

- Demonstrating distinguished scholarly learning and teaching across all levels and modes (including for example in the cloud) at the national level, with evidence of an emerging international reputation
- Contributing to the leadership of the moderation and maintenance of academic standards, and the development of course and unit curriculum that exemplifies Deakin's curriculum framework, and meets external requirements such as the Higher Education Standards Framework and professional accreditation
- Researching and publishing in learning and teaching, including testing the effectiveness of innovations designed to improve student and graduate outcomes including graduate employment
- Leading, designing and implementing best practice assessment and evidence of student learning outcomes at Unit and Course level, and leading assessment panels
- Counselling and mentoring students, including referring students to University services
- Providing leadership in teaching and learning through roles such as Associate Dean, Course Director of high enrolling courses or interdisciplinary programs

### SERVICE

- Contributing to the leadership towards the implementation of the University's Strategic Agenda
- Leading the recruitment, mentorship and development of midcareer staff
- Building and leading effective high performing teams
- Developing and strengthening links with the sport industry and professional sport groups as well as establishing new partnerships both within Australia and internationally
- Playing a leading role in high level University or Faculty committees
- Undertaking leadership roles in industry
- Representing the University at significant academic, professional and civic forums
- Initiating and leading significant community engagement activities
- Providing leadership in teaching and learning through roles such as Associate Dean, Course Director of high enrolling courses or interdisciplinary programs





## ORGANISATIONAL CONTEXT

The Associate Professor will report to Head of School.

The Associate Professor may also take direction from Deputy Head of School..

## ORGANISATIONAL RELATIONSHIPS

The Associate Professor will form part of the teaching team within the School of Exercise and Nutrition Sciences, which is one of five Schools in the Faculty of Health. Staff within the School report to the Executive Dean through the Head of School.

## THE SUCCESSFUL CANDIDATE – ESSENTIAL SELECTION CRITERIA

### QUALIFICATIONS

PhD in a relevant field (or equivalent).

### EXPERIENCE, KNOWLEDGE AND SKILLS

#### Academic Leadership

- Demonstrable academic leadership and professional expertise in the field of sport science
- Evidence of ability to work collaboratively and constructively with colleagues
- Outstanding interpersonal skills that demonstrate the ability to establish and maintain effective working relationships with students, the staff of the School, Faculty and with other members of the University and the wider community
- Evidence of ability to work collaboratively and effectively within university systems, committee and board structures and decision making processes

#### Teaching

- A record of excellent achievement in teaching and supervision at undergraduate and postgraduate levels
- Demonstrated evidence of innovation in learning including the use of multi-literacies and teaching effectively in a technology enhanced contemporary higher education environment
- Efficient administration of academic programs
- Ability to make an outstanding contribution to the Faculty's teaching programs in sport science through personal teaching and academic leadership

## POSITION LOCATION

**The location of work is to be negotiated. It may be at Deakin University's Melbourne Burwood Campus or Deakin's Waurin Ponds Campus.**

### BURWOOD CAMPUS

Melbourne Burwood Campus is Deakin's thriving metropolitan campus, attracting over 27,000 undergraduate and postgraduate on-campus students.

**GEELONG WAURN PONDS CAMPUS** Geelong Waurin Ponds Campus is located on the western edge of Geelong and is a thriving regional campus attracting over 7,000 undergraduate and postgraduate on-campus students

## PROBATIONARY PERIOD

The appointment will be confirmed subject to satisfactory completion of probationary objectives in accordance with Deakin policy and procedures. Satisfactory completion of the probation is subject to successful completion of the Deakin University Graduate Certificate of Higher Education, Learning and Teaching (GCHLT). Exemptions to this requirement or the granting of advanced standing for this requirement may be approved under certain conditions.

Any further terms and conditions in relation to your probationary period are provided for in

- Demonstrated capacity to develop and deliver student learning experiences that influences, motivates and inspires students to learn at undergraduate and postgraduate levels
- Demonstrated skills in the development and implementation of assessment methods that enhance learning outcomes and providing feedback that fosters independent learning
- A record of achievement in developing sport science curricula and resources that is research led and led to improved student outcomes.
- Ability to communicate effectively with students, colleagues and the public, orally and in writing

### Research

- Extensive experience as a productive member of a research team
- Research interests which align with the existing sport science research conducted within the School
- A track record of publication in highly ranked international academic journals
- A successful track record in winning nationally competitive and/or industry research funding

### Other

- Demonstrated ability to develop partnerships with professional sport organisations and with domestic and overseas educational institutions and industry
- Demonstrated commitment to Equal Opportunity principles and practices and Occupational Health and Safety

### Personal Qualities

- Demonstrated personal qualities of leadership, innovation and high motivation
- Ability to adapt to changes in the environment and effectively meets new challenges
- Commitment to the University's Mission, Core Commitments and Values which include – excellence, academic freedom, collegiality, continuous improvement, ethical behaviour, accountability and environmental responsibility

### SELECTION CRITERIA – DESIRABLE

- Experience in the preparation and delivery of University teaching and learning in the areas of on and off-campus, lifelong learning and flexible and on-line delivery
- Relevant sport science industry experience
- A research track record in strength and conditioning sciences or sport performance analysis and sport analytics or athlete monitoring and performance management

## PERFORMANCE EXPECTATIONS

Annual performance objectives and expected outcomes will be defined for this role in accordance with the Minimum Standards and Typical Duties for Academic Levels (MSTDALs) and Faculty Research Expectation Models (FREMs). Specific duties will be allocated with reference to the applicable Workload Allocation Model (WAM). These documents are updated from time to time and are available on request.



# APPOINTMENT PROCESS AND HOW TO APPLY

## APPLICATION

Thank you for your interest in the position of  
ASSOCIATE PROFESSOR.

## HOW TO APPLY

Please apply online via:  
[deakin.edu.au/about-deakin/careers-at-deakin](https://deakin.edu.au/about-deakin/careers-at-deakin)

Include cover letter, curriculum vitae  
and a response to the Selection Criteria.

Please quote reference number:  
170314

## SUPPORT FOR YOUR APPLICATION

All enquiries will be confidential and should  
be directed to:

ROD SNOW  
DEPUTY HEAD OF SCHOOL  
Telephone +61 3 9251 7315  
[rod.snow@deakin.edu.au](mailto:rod.snow@deakin.edu.au)

## CLOSING DATE FOR APPLICATIONS

SUNDAY 25 JUNE 2017

## INTERVIEW PROCESS

Short-listed candidates will be interviewed by a  
panel.

Candidates may be requested to present to the  
School and the wider Faculty.

Details of professional referees will be requested  
prior to the interview.

## REMUNERATION AND BENEFITS

An attractive remuneration package is offered.

This will include:

BASE LEVEL SALARY OF \$133,274

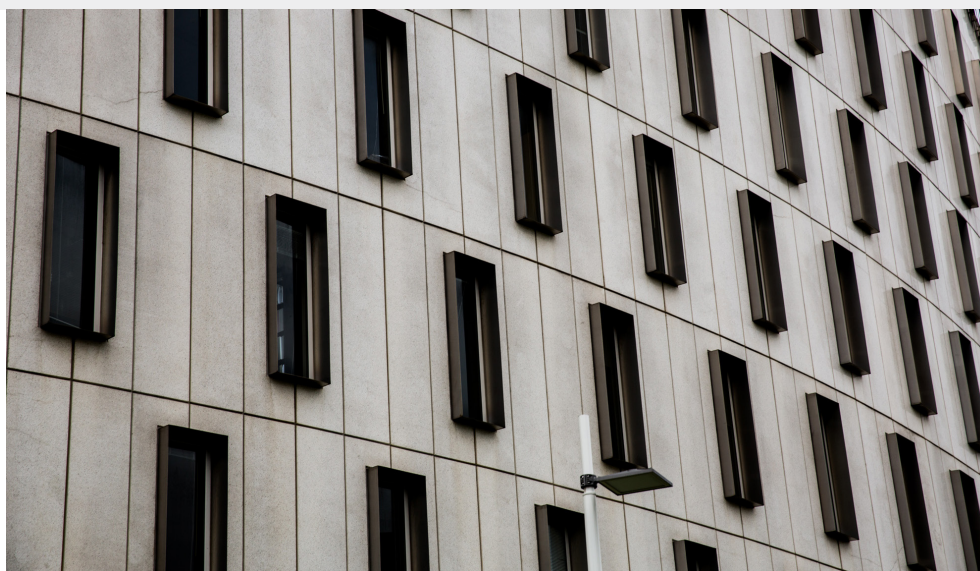
RELOCATION SUPPORT

Total Rewards at Deakin

## TERM OF APPOINTMENT

THIS POSITION IS FULL TIME AND CONTINUING.

THE COMMENCEMENT DATE OF THIS POSITION  
IS 31 JULY 2017



Deakin University values diversity, enables access and promotes inclusion. Deakin University is an employer of choice for women and strongly encourages applications from Aboriginal and Torres Strait Islander people.



# OUR LOCATIONS

Deakin has four campuses, one in Burwood, two in Geelong (Waterfront and Waurn Ponds) and one in Warrnambool. It also has corporate centres in Melbourne CBD, Burwood and Geelong, a network of technology-rich learning centres across regional Victoria and international offices in India, China and Indonesia.

Melbourne has been named the world's most liveable city for more than 5 years running\*.

Further information regarding our locations and relocating to Victoria can be found here:

## Our locations

### Considering Relocation



[Melbourne timelapse](#)



[Geelong/SurfCoast timelapse](#)

\*The Economist's annual study



## MELBOURNE BURWOOD CAMPUS

Melbourne Burwood Campus is Deakin's thriving metropolitan campus, attracting over 27,000 undergraduate and postgraduate on-campus students. It boasts open and inviting spaces for socialising and studying, innovative architecture, spacious new buildings and wireless hotspots.

## GEELONG WATERFRONT CAMPUS

Geelong Waterfront Campus is located on beautiful Corio Bay, in the central business district of Geelong. Originally built as woolstores in 1893, the buildings have been extensively renovated to create a modern and impressive campus centre for over 4,500 students.

## GEELONG WAURN PONDS CAMPUS

Geelong Waurn Ponds Campus is located on the western edge of Geelong and is a thriving regional campus attracting over 7,000 undergraduate and postgraduate on-campus students. It boasts open and inviting spaces for socialising and studying, innovative architecture, spacious new buildings and wireless hotspots. The campus features expansive landscaped grounds and extensive sporting facilities.

## WARRNAMBOOL CAMPUS

Warrnambool Campus is set on the banks of the picturesque Hopkins River, close to local surf beaches and popular tourist attractions. The Warrnambool Campus is a friendly, close-knit community, with a personal and informal relationship between staff and the students who study there.

