

Interkulturelle Kompetenz und Sport



**Ardith Peters, Ph.D., Associate Professor,
Kennesaw State University**

**Dean M. Ravizza, Ph.D., Assistant Professor
Salisbury University**

**4th Annual Seminar on Sport in Post-Disaster Intervention
November 24, 2011**

Presentation Overview



- **Content:**
 - **Define culture**
 - **Recognize culture within ourselves**
 - **Identify culture within other contexts**
 - **Apply our understanding of cultural competence to specific cases**

Presentation Overview



- **Methods**
 - Small group activity
 - Lecture
 - Large group discussion
 - Case study analysis

Directions for Small Group Activity



- Introduction with a culturally-relevant greeting within the general space.
- Select an item with you and explain how it makes a statement about you and/or culture.
- Stay within your group until otherwise noted.



Includes behavior (act) and outcome of behavior (artifact).

World view or ethos of particular people, how they construct and employ meanings that guide perceptions in multiple contexts.

Definitions of Culture

Culture is a human product through which we give and take meanings associated with:

Material world

- ✦ Art, food, sport, and music

Social World-

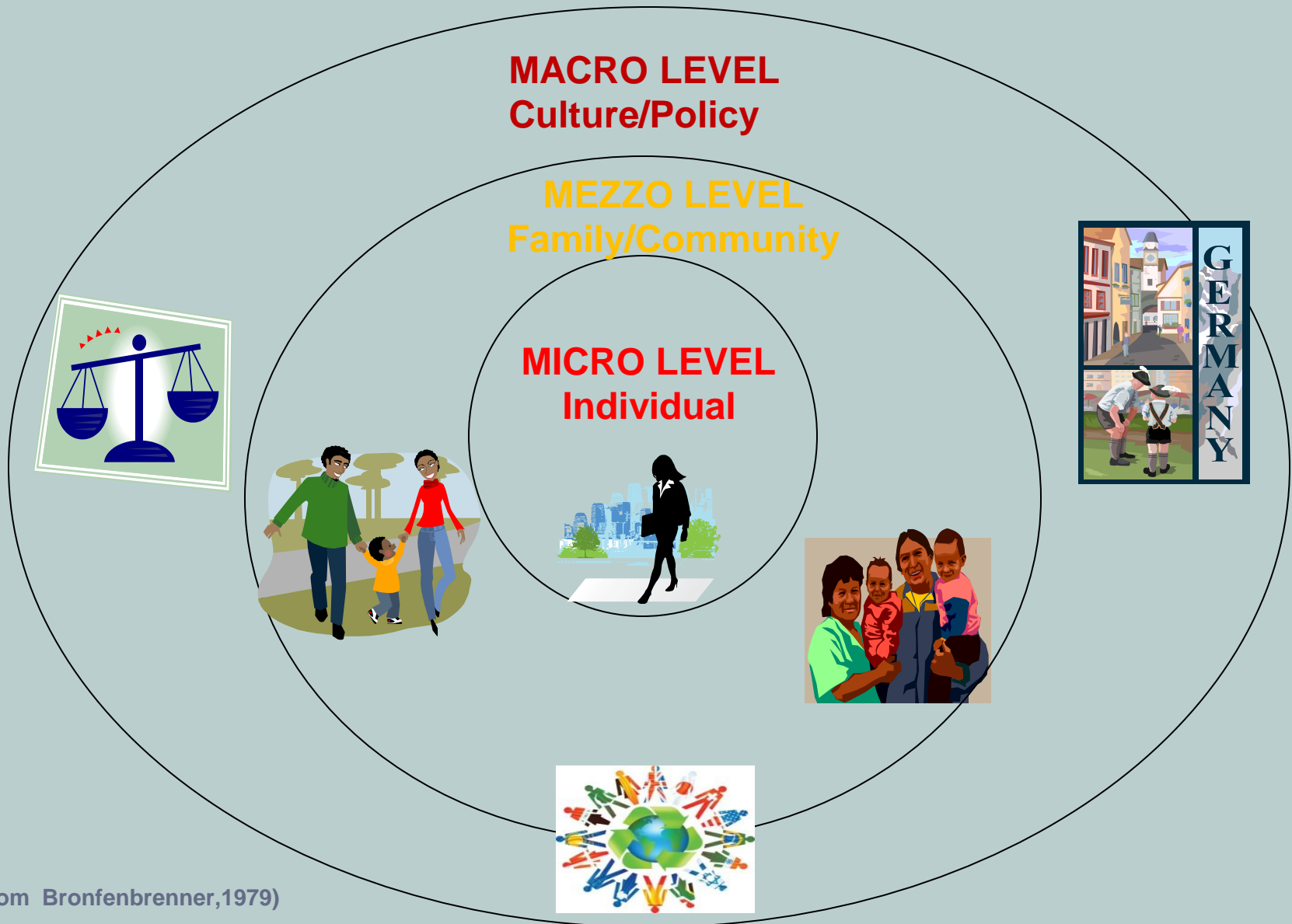
- ✦ Faith, race, ethnicity, and gender roles

Characteristics of Culture

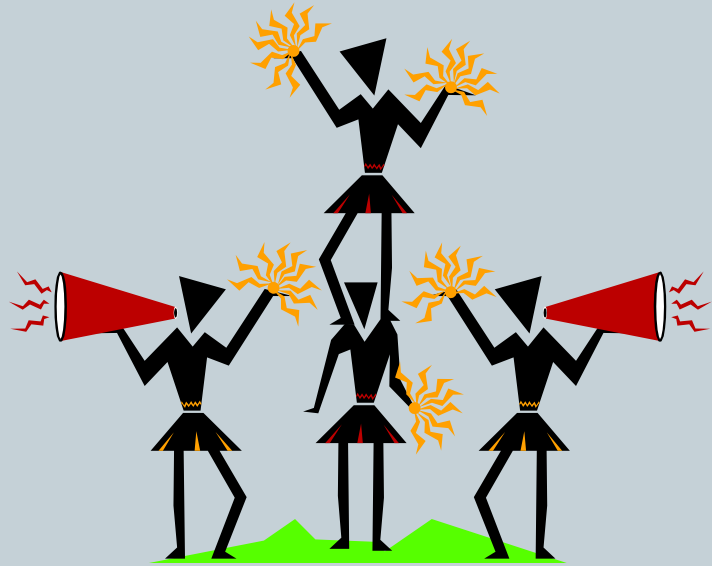


- ❖ Culture is learned and handed down from generation to generation
- ❖ Culture is adaptive. Members of a culture will adapt to environmental, political, social, and economic changes
- ❖ Culture shapes the way people interact with members of other cultures
- ❖ Culture is creative/symbolic. Members of a culture create symbolic artifacts that are unique to their culture

The Person in Environment/ Sociological/Psychosocial Perspective



Examples of Cultural Incompetence



4 components:

(a) Awareness of one's own cultural worldview, (b) Attitude towards cultural differences, (c) Knowledge of different cultural practices and worldviews, and (d) cross-cultural skills.



Cultural competence is an ability to understand, communicate with, and effectively interact with people across cultures.

How do we develop cultural competence?



- Understand and acknowledge your limitations.
- Realize there is more than one way.
- Identify key “cultural experts” within the community.
 - Elders
 - Traditional leaders
 - Teachers
 - Local officials ex. CDOs, Gender officer
 - Youth, gender, and age-group representatives
- Consult with the “experts” and utilize an observational period for information gathering.

How do we apply cultural competence?



- Factor the findings into program development.
- Determine a means to satisfy cultural relevance within the program and the requirements/interests of funders.
- Implement a program based on findings.
- Monitor for progress and necessary changes.

Cultural Interpretations



Cultural Interpretations



Cultural Interpretations



Cultural Interpretations



In the Land of Newgarth: Dining in Newgarth



In Newgarth, people eat with their hands rather than utensils such as a fork or spoon. They even eat rice with their hands.

A friend of yours calls from Newgarth. She reports that Newgarthians get upset when she pulls a fork and spoon from her purse to eat. When she eats in the home of a Newgarthian family, their displeasure is quite apparent—they seem to be insulted by her refusal to eat with her hands. She tells you that she eats with a fork or spoon because her mother taught her that it is wrong to eat with your hands.

What do you think of this situation?

What advice would you give to your friend?

In the Land of Newgarth: Taxes in Newgarth



In the country of Newgarth the tax practices are different from ours. For example, companies and individuals understate their income by 30-70% when filing their taxes. The Revenue Service in Newgarth knows that companies and individuals do this and replies with an invitation to discuss the tax return. The standard practice of Newgarthians is to hire a representative, known as a *halfhoat*, to handle this discussion. He receives a fee that includes a *svedka*-a payment to the Revenue Service agent with whom the *halfhoat* deals. In general, the higher the *svedka*, the lower the tax. However, the *halfhoat* has an interest in keeping the *svedka* low, since it comes out of his fee. The entire fee paid to the *halfhoat* is tax deductible in the following year.

A friend of yours has moved to Newgarth. She calls and says, “The people here lie about their incomes and then bribe the tax officials.” She asks for your advice. She wants to know whether it is ethical to file taxes the Newgarthian way.

What advice would you give to your friend?

In the Land of Newgarth: Conscription in Newgarth



Suppose that, desperate for hard currency, the government of Newgarth developed a novel way to attract foreign tourists. In an effort to outdo the Oldgarthian sex trade, Newgarth developed a federal sex service. Boys and girls ages 8-15 are required to register for a sex draft. Draftees are selected by means of a lottery; those selected are required by law to provide one year of national service in the sex trade. These sex workers are regularly screened for sexually transmitted diseases and provided with effective treatment when necessary. Newgarth is thus in a position to provide a wide array of sexual services at a very competitive price. This system has been in place for many years.

A friend of yours moved to Newgarth several years ago. Her oldest daughter has just turned eight. She has just received notice from the government that her daughter must register for the draft. She calls to ask for your advice.

What will you tell her?

Final Thought



There is more than one right way....

Danke!